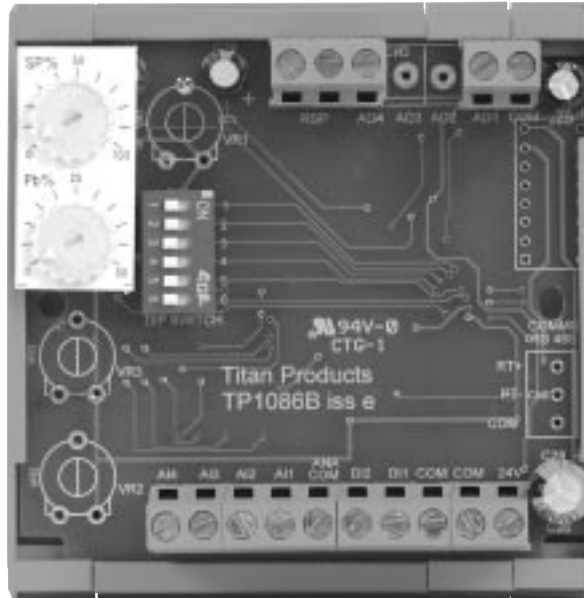


## ATC10V VOLTAGE INPUT CONTROLLER



### DESCRIPTION

The ATC10V is designed to provide a Proportional plus Integral control from a 0-10V or 2-10V transmitter input.

The ATC10V is ideal for applications such as humidity, pressure and speed control.

The ATC10V provides the ability to change the control inputs or outputs from 0-10V to 2-10V range as well as changing the output control action.

The ATC10V is Din rail mounted and caters for an optional remote setpoint adjustment.

### FEATURES

- \* 24 Volt AC/DC supply
- \* Proportional plus Integral control action
- \* 0-10V or 2-10V Control inputs or outputs
- \* Option to reverse output control signals
- \* ON/Off input option
- \* Remote setpoint adjustment
- \* Output for BMS monitoring
- \* DIN rail mounting

### SPECIFICATION

Power Supply	24 Volt AC/DC (+/- 15%)
Power Consumption	12mA plus 0-10V outputs
Outputs	0-10V (5mA max) controlled 0-10V (5mA max) remote monitoring
Inputs	0-10v or 2-10V 0-10V BMS for SP offset RSA Remote Setpoint (500-10500 ohms)
Settings	Setpoint (SP) range 0-100% Proportional Band (Pb) 0-50% Integral action (I time) 10, 50, 100, 200 secs
Option Selections	SW 1+ 2 Integral I time SW3 Input 0-10V or 2-10V SW3 Output 0-10V or 2-10V SW5 BMS reset SW6 Monitoring output
Terminals	Max cable size 1.0mm
Operating Temp	0-50°C
Dimensions	80 mm wide 85 mm high 45 mm deep



Measurement Devices for Control Systems

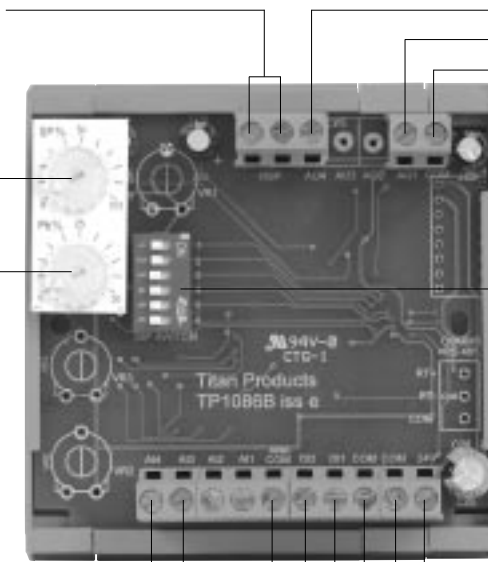
# TECHNICAL INFORMATION

## ATC10V CONNECTIONS & SETTINGS

Remote Adjustment  
RSA10% (+/-10%)

SP  
Range 0 to 100%

Pb  
Proportional Band  
Range 0-50%

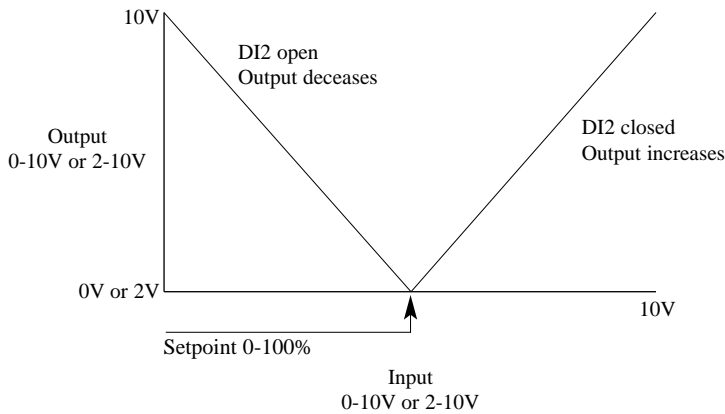
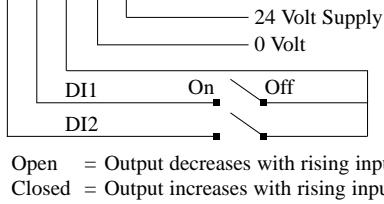


AI2 = Not used  
AI3 = BMS reset input 0-10V (+/-10%)  
i.e 5V input no reset  
AI4 = Control input 0-10V or 2-10V

BMS monitoring  
0-10V or 2-10V Control output  
COM

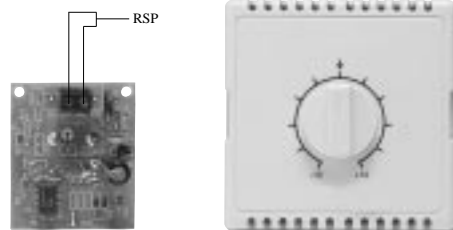
**Integral action**  
SW1+2 OFF = 10 Sec  
SW1 ON = 50 Sec  
SW2 ON = 100 Sec  
SW1+2 ON = 200 Sec

	<b>OFF</b>	<b>ON</b>
SW3	Input 0-10V	Input 2-10V
SW4	Output 0-10V	Output 2-10V
SW5	No BMS reset	BMS reset
SW6	Output V	BMS multiplexed output



MULTIPLEXED AO4 SIGNAL			
Condition	Output V	Range %	Time
Actual Input	0-10V	0 to 100%	4 Sec
Calculated SP	0-10V	0 to 100%	4 Sec
Actual SP setting	0-10V	0 to 100%	4 Sec
Pb Setting	0-5V	0 to 50%	4 Sec

RSA10% Remote Setpoint Adjuster +/- 10%



### PRODUCT TYPES

ATC10V DIN Rail mounted controller  
RSA10% Remote Setpoint adjustment (if required)

## TITAN Products Ltd.

Unit 7 Southside, Bredbury Park Industrial Estate, Bredbury, Stockport SK6 2SP England.  
Tel :- 0161 406 6480 Fax :- 0161 494 8309 E-mail: admin@titanproducts.com Website: www.titanproducts.com

© Copyright Titan Products Ltd. 2003